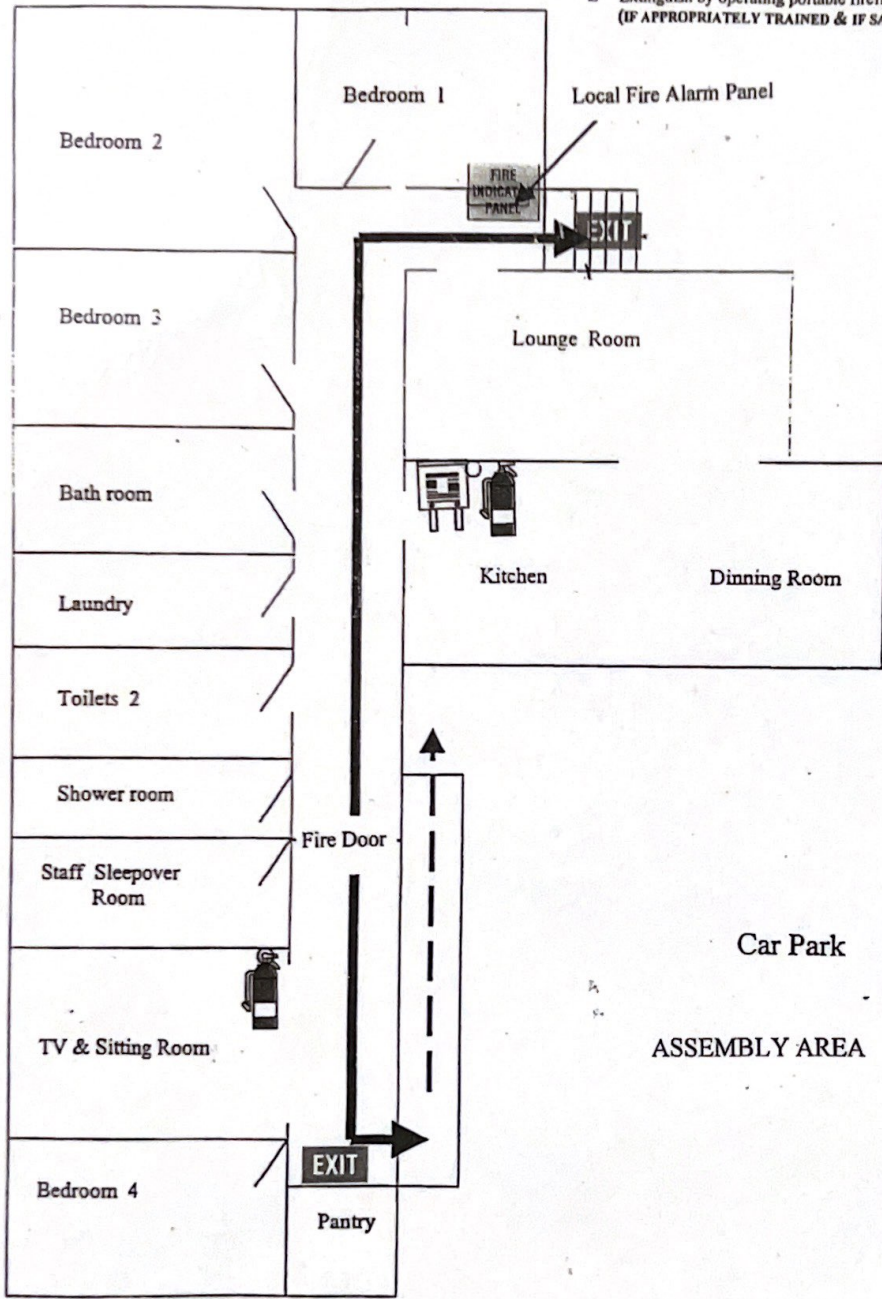


GRACE COURT

In the Event of Fire/Smoke

- R Remove yourself and others from the immediate danger area
- A Alert others
Contact the Fire Brigade "000"
(Advise of house location, type of occupancy, and evacuation assistance required)
- C Confine fire and smoke (if applicable) by closing doors and windows
- E Extinguish by operating portable firefighting equipment
(IF APPROPRIATELY TRAINED & IF SAFE TO DO SO)



EVACUATION ALARM

LOCAL FIRE ALARM SOUNDERS

EMERGENCY PHONE NO

000